

#### TECHNICAL SPECIFICATION:

- 24Vdc, 16Watt
- nom. 0.8Nm – max. 1.0Nm
- 34 rpm
- max. running time 7 min.
- max. curtain weight 4 kg
- max. 5 cord rolls
- has to be used with Forest RF remote control, Forest wireless wall switch or Forest wireless connector
- only to be used in Forest BS system and with Forest power supply for BS motor



WARNING: WHEN USING THE QUICK LOCK CORD ROLL, BE SURE TO LOCK THE CORD BEFORE USING THE MOTOR

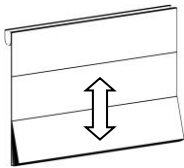
#### PROGRAMMING REMOTE TO BS MOTOR

first select the desired channel

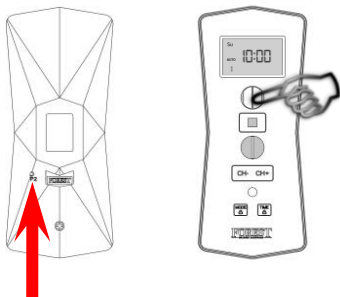
switch on power to the motor:



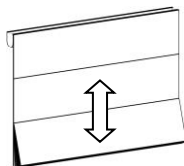
motor will jog to acknowledge:



within 10 seconds after jog, press P button and press open button on remote, one one after the other



motor will jog to acknowledge:



NOTE: repeat this procedure to program a 2<sup>nd</sup> or 3<sup>rd</sup> remote/wall switch to the BS motor

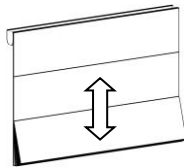
#### REMOVE PROGRAMMED CHANNEL

first select the desired channel

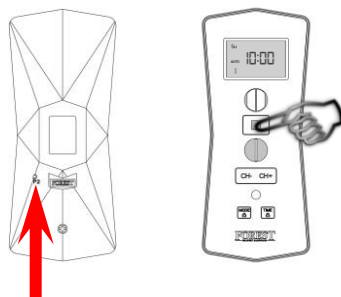
switch on power to the motor:



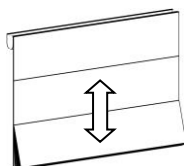
motor will jog to acknowledge:



within 10 seconds after jog, press P button and press STOP button on remote



motor will jog to acknowledge:



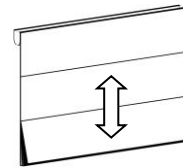
#### CHANGE MOTOR DIRECTION

first select the desired channel

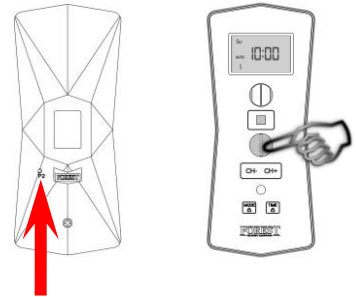
switch on power to the motor:



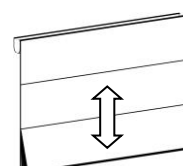
motor will jog to acknowledge:



within 10 seconds after jog, press P button and press CLOSE button on remote



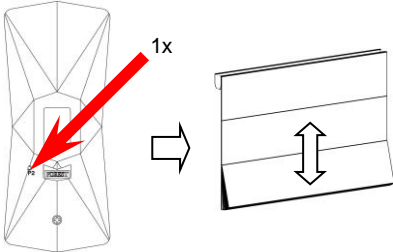
motor will jog to acknowledge:



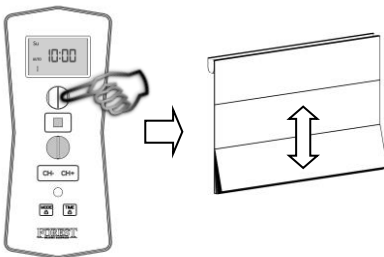
NOTE: if you need to start over, switch off the power and wait at least 20 seconds before switching on the power

#### SET UPPER END LIMIT

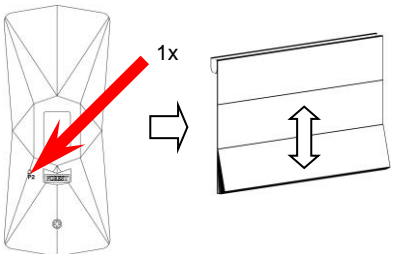
press P2 button once,  
motor will jog to acknowledge:



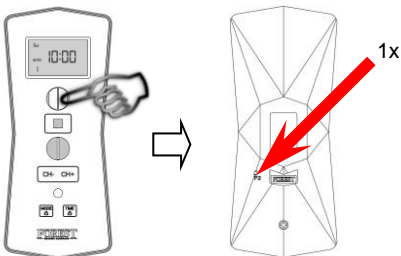
press OPEN button on remote,  
motor will jog to acknowledge:



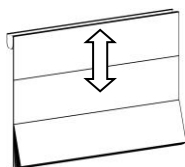
press P2 button once,  
motor will jog to acknowledge:



adjust desired upper end limit and  
press P2 to save the upper limit:

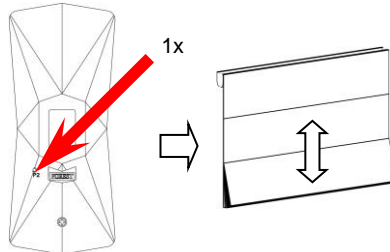


motor will jog to acknowledge:

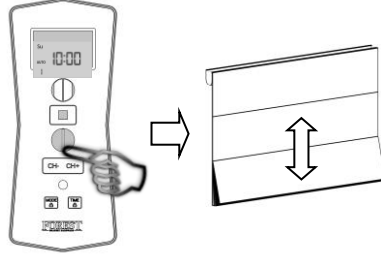


#### SET LOWER END LIMIT

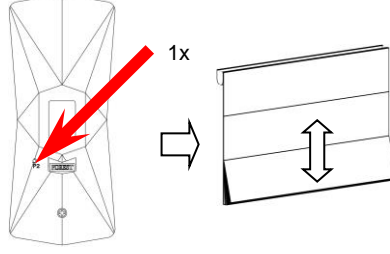
press P2 button once,  
motor will jog to acknowledge:



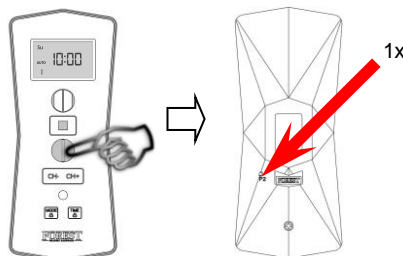
press CLOSE button on remote,  
motor will jog to acknowledge:



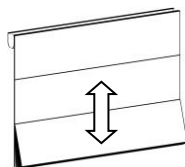
press P2 button once,  
motor will jog to acknowledge:



adjust desired lower end limit and  
press P2 to save the lower limit:

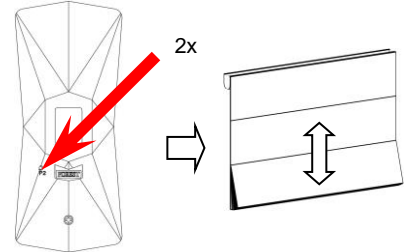


motor will jog to acknowledge:

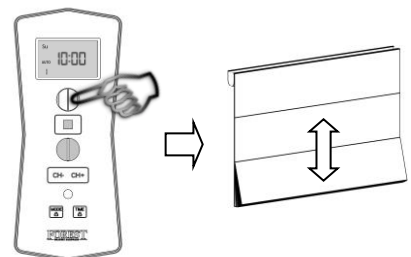


#### DELETE LIMITS

press P2 button twice,  
motor will jog to acknowledge:

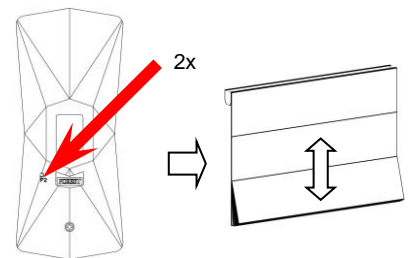


press OPEN button on remote,  
motor will jog to acknowledge:



#### DELETE ALL MEMORY

press P2 button twice  
motor will jog to acknowledge:



press CLOSE button on remote,  
motor will jog twice to acknowledge:

